

THE APPLETON WITH EATON

MAY 2019
NUMBER 621

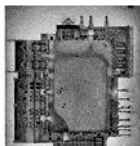
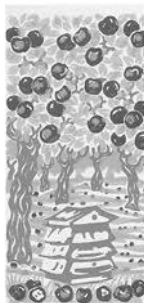
Advertiser

PRODUCED BY THE CHURCH FOR THE COMMUNITY



SAT 18 & SUN 19 MAY
10.00AM TO 4.30PM
APPLETON VILLAGE HALL

WONDERFUL WORK FROM
16 ARTISTS
AND THE
EXCELLENT
CAFE PICASSO



ART WEEKS
STON

The Remainers

Imagine - and, for some of you, this may not be for the first time! - that you are a member of a famous rock-band. You have over a decade of hits behind you, a cabinet full of awards from all the cool music papers, and platinum discs adorn the walls of your spacious, if rather tasteless, mansion. You are, quite simply, living the dream; when suddenly a bombshell drops as your front-man announces he's quitting – the creative genius and driving force behind the group's success has decided to leave, and he will not be persuaded to stay. What would be going through your mind at that moment? And what would your options be? One possibility, of course, would be for you and the other band-members to pack up and go home as well: you could bring out a Greatest Hits album or two, put your feet up by the pool, and watch the royalties roll in. Alternatively, you could try to soldier on with a replacement front-man: you could audition someone from outside (a roadie, maybe?) or perhaps promote from within. After all, who wouldn't jump at the chance of becoming the next great icon of the British music scene? What do you do when you lose your front-man?

I am writing this on Easter Saturday, which is perhaps the strangest day in the Christian calendar: there's something of a "limbo" feel to it, since it straddles the awful, agonising death of Jesus on Good Friday and his glorious resurrection on Easter Sunday. For Jesus' original disciples, of course, the very first Easter Saturday would have been more than just strange: it would, rather, have been a day filled with grief and unimaginable misery, a day of questioning and great uncertainty – not least because they had just lost their front-man. Their leader for the past three, life-changing years now lay dead in a borrowed tomb. What were they supposed to do? Pack up and go home, in fear for their lives? Cut their losses, and dine out on the memories of those great days on the road with Jesus? Or should they advertise for a replacement front-man, someone from outside the band with the gift of the gab and a bit of charisma? Or should one of them (not wishing to push themselves forward, of course) put his neck on the line, and step into Jesus' sandals to carry on the good work?

Knowing that his disciples would face such questions, Jesus sought to prepare them for his departure. On the night of his arrest, just after the Last Supper, he made it crystal clear that there was to be no replacement front-man, and no disbanding either: they were not to go off and pursue solo careers on the back of their success with him. Instead, they were to continue together, as *his* band, as *his* disciples, dependent *on him* for life and fruitfulness, like branches in a tree: "I am the vine; you are the branches. If a man remains in me, and I in him, he will bear much fruit; apart from me, you can do nothing." This claim - to be the ultimate source of spiritual life - echoes some of Jesus' earlier teachings: I am the Bread of Life; I am the Resurrection and the Life; I am the Way, the Truth and the Life. **And it makes no sense at all;** unless the rock really rolled on Easter Sunday, and God really raised him from the dead.

With my best wishes and prayers, as ever, Ken.

Save the Date!

- Sunday 5th May: Bluebell Teas in Church (2.30-5.00pm)
- Sunday 2nd June: Open Gardens Afternoon & 'Songs of Praise'

Women's Breakfasts

at St Laurence Church, Appleton.

8.30am-10am

May 11th

September 14th

November 9th

All Welcome!

Contact Jennie Revell for further details:
863611

"Tea and Chat"

Every Monday in St. Laurence Church

2.30 - 4.00 pm.

Sorry, no Tea & Chat

on Bank Holidays (6th & 27th May)

Need a lift?

Ring: Margaret 862958

Pam 863207

Rosemary 864808



GRANTS AVAILABLE for local school- leavers

If you previously attended Appleton Primary School and you are leaving Secondary Education this summer, you may be eligible for a grant of up to £100 towards University books or tools for an Apprenticeship.

To make an application, please send an email, with details of your proposed course or training, to Mr David Dymock, Clerk of the Appleton Trust:

dymockdj@gmail.com

Appleton WI

The May meeting will be held on Thursday, 16th May at 7.30pm in the Village Hall, Our speaker will be Shelley Edwards who will tell us about Trading Standards. The competition will be a homemade birthday card.

There will be a stall and contributions are welcome.

We are always delighted to have visitors at any of our meetings.

Elaine Flint
01865 861838

Who to call

For Service information, Baptisms, Weddings, Funerals & Church Building enquiries, please contact:
Reverend Ken on 655737 or
kencampbell@stlaurencechurchappleton.org
Remember to visit your Church website at:
www.stlaurenceappleton.org

Maurice Manning

Brenda, Jane and Robert would like to thank everyone for the lovely sympathy cards and support in memory of Maurice who sadly passed away in February.

 *Opera in the Garden* 

Performed by Charity Opera

in aid of



and



Saturday 22nd June – 7.00pm

Gates open 6.30pm for picnics

Cubs Puddle, Appleton

on the bank of the river Thames

*Please bring your own seating, picnics, drinks and
money for the raffle!!*

**Tickets £15 each available in advance from
Claire Barratt -**

01865 863146 / cbaratt28@gmail.com

The Appleton with Eaton
Neighbourhood Plan is entering its
final phase!

**Pre-submission consultation will
run from 7th May 2019 – 21st June
2019.**



The Neighbourhood Plan document and a questionnaire will be delivered to every home. There will also be the facility to answer the questionnaire online via the website at appleton-eaton.org. Supporting documents will be available to view on the website and at the Village Shop.

There will be a **launch event** for the Neighbourhood Plan on **Saturday the 18th May at 10am in Appleton Primary School.**

All residents are invited to attend to discuss the proposed Neighbourhood Plan and next steps.
Refreshments provided!

It is important for **you** to give **your** opinions on these documents to ensure that the Neighbourhood Plan reflects **your** views on how the development of the Parish will be influenced over both the immediate and long-term future.

If you have any questions, please feel free to contact the Neighbourhood Plan Secretary at

aweneighbourhoodplan@gmail.com or 01865 865 876.

Gardening Club



To pick up some locally-grown plants at reasonable prices, don't miss the Club's annual **Plant Sale on Saturday 25th May at 10.00 am** in Appleton Village Hall. Club-members and others who have plants to donate for sale are asked please to bring these to the Hall between 8.30 and 9.00 am, if possible. Alternatively, they can be taken in the days leading up to the Sale to either Charles Moorley at Redcliffe House, Englands Lane or John Page at 27 Badswell Lane.

The Club's April lecture was given by Dominic Hamilton, who spoke on "The History and Restoration of Painswick Rococo Garden". As the Garden Director, he gave us a brief history of the Garden from its beginning in the mid-eighteenth century to its rescue from a state of dereliction in the 1980s, and its restoration and development since then. A fascinating talk, which left members anxious to visit Painswick this summer – preferably when the roses are out.

May's meeting at 7.30 pm on **Wednesday 8th May** starts with the **Club AGM**, which will be swiftly followed by a talk by Darren Mann from the Oxford University Museum of Natural History on "The World of Poo – A Dung Beetle's Perspective". The meeting will be in Appleton School Hall. Guests are very welcome at £3 a head, and it will be time for members to renew their subscriptions (still only £5 for the year). Wine and nibbles will be served.

Hon. Secretary
Diana Gordon
01865 864536

Appleton School is Outstanding!

We are extremely proud of our school and have always believed it is a special place to be, therefore we were delighted when the OFSTED inspectors judged the school as '**Outstanding**' in February this year.

OFSTED Findings:

"There is a tangible buzz to learning activities as pupils thrive on high levels of challenge"

"The school's vision of 'building wisely for life' is fully exemplified in your work"

"The curriculum is exceptionally well planned and enables pupils to flourish in many different aspects of learning"

These findings are testament to both our growth mindset approach to learning and our vision, demonstrating the resilience we have worked so hard to instil in our children and a determination to be the best we can for ourselves and the good of others.

I am immensely proud to be Headteacher of this wonderful school and would like to thank everyone for working so hard to make Appleton such a special place. To find out more of what we are doing please visit our website at

<https://appleton.oxon.sch.uk>.

Mrs Amy Carnell
Headteacher



Appleton with Eaton Tennis Club



Membership of the Club

Membership renewals are underway and if you have not received your invitation to re-join, please email the Club. New members can complete the form on the website – see below – to join this friendly club.

Annual Tournament

Our annual tournament draw has taken place with the Finals Day being on Sunday 8th September. Please get your matches underway as soon as possible – don't leave it too late!!

Family Fun

Our next family morning will be on Sunday 5th May from 10 - 11am – come along to the courts with your juniors for some fun with our club coach, Craig. £2.50 per child or £5 for a family (up to 4 members), just turn up on the day and play! (check Facebook for weather updates)

Casual Play

If you would like to play on one of our courts while you are here visiting or on holiday, please go to Appleton Village Shop where you can get details of how to access the courts.

Our Junior Coaching Programme has already started but if you have a child under 10 who would like to take part, please contact our coaching officer, Rob Scriven robert.scriven1@btinternet.com, or see our website for more details. Coaching takes place on Friday afternoons starting with Pre-Schoolers at 2.30pm and continuing with Foundation, Y1 & Y2 at 3.30pm, Y3 & Y4 at 4.15pm, and Y5 and Y6 at 5pm.

For more information or to contact the club:

appletonwitheatontennisclub@gmail.com

Website: www.appleton-eaton.org/tennis or <http://cspark.at/apple6>

Facebook: www.facebook.com/

[AppletonwithEatonTennisClub/](https://www.facebook.com/AppletonwithEatonTennisClub/)

Appleton Cricket Club



Summer has arrived! Now is the time for you to dust off your gear for a game.

Appleton Cricket Club play friendly games mainly on Wednesday evenings and Sunday afternoons. You are most welcome to join us. Fixtures in May and June:

Sunday 5th May v Cumnor 1 pm at home

Sunday 12th May v Headington Quarry 1 pm at home

Wed 15th May v Oxfordshire CC 6 pm at home

Sunday 19th May v Wheatley 1 pm at home

Friday 24th May v Cokethorpe 6 pm away

Wed 29th May v Isis at 6 pm at home

Sunday 2nd June v Minster Lovell 2 pm at home

Wed 5th June v Iffley 6 pm at home

Wed 12th June v FFTMCC 6 pm at home

Sun 16th June v Cumnor 2 pm away

Wed 19th v Trumpton 6 pm at home

Sun 23rd v Islip 1 pm at home

Wed 26th v Isis 6 pm away

Please feel free to contact the captain, Hjalmar Blomerus, on 07899 080200, or Roger Gilkes, rhgilkes@gmail.com for further information.

Roger Gilkes

Evergreen Club

Next meeting Friday May 10th 1.45pm.

Christine Ewing will put us through our paces with chair exercises combined with our melodious singing! New members always welcome.

Trish Wagstaff

NEWS FROM

Email: appletonshop@gmail.com

Web: www.appletonshop.co.uk

Tel: 01865 863191



Opening hours:

Shop

Monday–Friday: 7am–7pm

Saturday : 8am–1pm

Sunday: 8am–12noon

Post Office

Monday & Thursday

9am–1pm



Spring is here at last and our shop is full of seasonal food!

If you are planning a picnic or country walk, we now have a great range of healthy snacks and nuts in handy bags ready to go.

Have you tried our home cooked Frittata slices and small quiches from the deli chiller? They are freshly made in Appleton and ideal for picnics or lunch at home or in the garden.

We also stock freshly made sandwiches, baguettes and home- made cake from Monday to Friday.

MONTHLY TURNOVER

	2016/17	2017/18	2018/19
May	19,951	20,267	22,428
June	21,748	22,795	24,483
July	23,878	23,809	27,343
Aug	22,150	20,750	23,774
Sept	20,491	19,963	21,849
Oct	20,511	20,732	22,625
Nov	19,404	19,896	22,583
Dec	19,831	22,315	23,486
Jan	17,788	18,154	20,000
Feb	17,233	17,937	19,782
Mar	19,656	22,387	22,305

Shop and Post Office opening for May 2019 Public Holidays:

Shop open

Monday 6th May 9. am – 11 am

Monday 27th May 9. am - 11am

No paper deliveries or saves in the shop - come and buy at the shop.

Post Office -

Closed on bank holidays Monday 6th May

And Monday 27th May

Open on: Tuesday 7th May 9am-1 pm

And Tuesday 28th May 9am- 1pm

All other weeks Post Office open as usual:

Mondays and Thursdays 9am-1pm

Our Extensive “Free From” Range of food

Is ever increasing and if there's anything you would like us to stock, just ask.

Some of the 'Free From' Stock:

Nairn's oat cakes

Alpro almond milk

Waitrose Soya drink

Gluten free Pretzels, Granola, Ciabatta rolls,

Flour and Pasta

Wanted: A new Supplier of Sandwiches

From late May/ early June, to make and sell to the shop between 8 and 12 packets of sandwiches per day (Monday to Friday only) to be delivered in the mornings before 9 am.

Full information, suggested fillings and help with packaging sourcing will be given. The work would be one week on, one week off, to be shared with Laura, our current supplier and to cover holidays.

For further information, please ask one of the shop staff.



Opportunities to Help your Community Shop

In order to keep the shop open on Saturday afternoons (1pm to 3pm) during the summer months, volunteers are needed.

If you would be happy to cover once or twice on a Saturday afternoon during June, July or August, please could put your name on the list beside the rotas in the Shop?

If you would like to know more about volunteering, please contact the shop (863191) or Dave Dymock on 01865 863709

Take a look at the Community Shop home page on the Village Website at:
www.appleton-eaton.org

And follow us on Facebook
www.facebook.com/appletoncommunityshop

Solo Ladies

Everyone who is alone is very welcome to join us at our monthly luncheon.

Future Dates are:

Wednesday 29th May

Thursday 27th June

Venues to be advised

If you would like any information please contact:

Carol (863759, carolbateman59@gmail.com)

Barbara (863262,
barbara.kimsey@outlook.com)

Visit Oxford without the hassle

Have you thought about using the weekly Wednesday Comet service to Oxford? Get driven into Oxford and brought back in time for lunch or the school pick up. No worries about where to park and no parking costs, just two and half hours free to shop, meet friends, have coffee, pop to a museum or whatever takes your fancy.

The minibus leaves Appleton just after 10.10 and returns from Oxford at 1pm. All we ask is that you donate £2.50 towards the return cost of your journey.

Watch out for the Monday Abingdon service too!

Appleton Village Hall

Suitable for meetings, parties, dances and wedding receptions. Enquiries

Rachel Knight

appletonvillagehallbookings@gmail.com
07584426030



Appleton Open Gardens 2019

Sunday 2nd June
2pm-5pm

Eight beautiful gardens with teas
Songs of Praise 5 - 5:30pm
Pimms party 5:30 - 7pm

Adult pass to all gardens - Just £5
Accompanied Children FREE

TEAS - ICE CREAMS - PLANTS
BOOKS- STALLS

In aid of St Laurence Church, Appleton with
Besselsleigh and Restore a charity working for
mental health

Appleton & Eaton Gardening Club present
their Sixth Annual

Plant Sale

Appleton Village Hall

Saturday 25th May, 10.00 a.m.

Locally grown plants at reasonable
prices.

Shrubs, bedding and herbaceous plants,
tomatoes, courgettes, cucumbers,
beans, herbs, and much more.

Come early – we sell out fast!

PELLMANS

Your Local Solicitors

- **Business and Employment Law**

Contracts, Legal Compliance & Disputes

- **Property**

Buying & Selling Homes, Commercial & Agricultural

- **Wills, Probate and Trusts**

Tax Planning & Lasting Powers of Attorney

01865 884400

www.pellmans.co.uk

1 Abbey Street, Eynsham, Witney, Oxford
OX29 4TB

Home visits and evening appointments
available

Dog Owners

I appreciate it is not the most pleasant of subjects however, I felt compelled to write as it is such a shame that dog owners continue to leave mess on the verges in our beautiful village. Not only did I clear up after my dog this morning I also cleared up after 2 others, partly to be thoughtful to the people whose houses the mess was in front of, and partly to stop my dog treading in it! As the weather gets better more and more children will be out and about in our village and as we all know dog mess can be extremely harmful in the wrong circumstances. PLEASE PLEASE can dog owners 'clear up' and keep our village safe and clean.

Thank you
A responsible dog owner!

Claire Barrat



BLUEBELL

Sunday 5th May
2.30 - 4.30pm

TEAS

**During May Besselsleigh Wood is filled with a
glorious carpet of bluebells**

On Sunday 5th May 2.30 pm - 4.30 pm

**St Laurence Church in Appleton, will be serving
tea and homemade cake.**

Everyone is welcome to call in for refreshments.

Contact Carol Dodimead for further details 07767796071

News from the Appleton with Eaton Parish Council

Neighbourhood Plan Launch Meeting and the Annual Parish Meeting

The Neighbourhood Plan pre-consultation phase will begin on the 7th May 2019 and end on the 21st June 2019. The Parish Council will hold a Neighbourhood Plan Launch Meeting in conjunction with the Annual Parish Meeting on **Saturday the 18th May at 10am in Appleton Village School.**

All are welcome and tea/coffee/biscuits/cakes will be provided!

Dog fouling

Now Spring is coming could we send a gentle reminder to all dog walkers to please clean up their dog poo. It is becoming a problem again in the village, particularly bags of poo left around, for example near the Park Lane gate in Long Close and at the entrance to the woods. Please put the bags in your black bin or in the special bins provided around the village. Thank you.

Allison Leigh, Parish Clerk

01865 865 876 / parishclerk.appletonwitheaton@gmail.com

WALKING NETBALL - it's fast and fun!

If you were good at netball at school, this is for you; if you were terrible at it (as some of us were), this is DEFINITELY for you! Our teacher, Vicky, starts each session with warm-up exercises that help us practice passing balls, defending, and shooting goals. Then we launch into a game. Rules are very simple as we've no floor markings and don't yet play any special positions. We may not be allowed to run, but even at walking pace it's a very energetic all-body work-out. Most of all, it's great fun! We always do gentle cooling down exercises before we leave.

We are trying to get funding to continue sessions and badly need more people to join us. We've been meeting in the Village Hall on Fridays 12-1, but will move outside as the weather warms up. We pay by the session as we know not everyone can make it every time. There's no upper age limit for walking netball.

Want to join us or find out more?

Contact Tian Davidson: 01865864578 or
tiandavidson@gmail.com

APPLETON 250 CLUB

The results of the March prize draw are:-

Mr David Woodhouse	41	£25
Mr John Savings	70	£25
Mrs Sally Gray	188	£10
Miss Christina Salmon	36	£10
Callum Rose	124	£10
Mr Vernon Wheeler	226	£10
Mrs K.Portman	109	£10

The Committee has made donations to Appleton Scouts towards their Summer Aqua Camp and OX13 for general running costs and activities.

Our financial year ends in May and we will soon be collecting for 2019/20 when we shall be awarding fewer but larger prizes

Sue Johnson

Tel 0330 1137868

ADVERTISEMENTS See p.11 for costs and deadlines

CARPET & UPHOLSTERY CLEANING

unbeatable results & your
carpets dry in approx. 1 hour! Call Grimebusters
01865 726983



FARMOOR OSTEOPATH

Do you suffer from lower back pain, sciatica,
rheumatism, arthritis, sports injury or muscle
tension? If so, consult your local osteopath - Sarah
Ingram (nee Darlington) D.O., G.O.s C. registered
with the General Osteopathic Council (Osteopath's
Act 1993), Tel. 01865 864053.



JAMES JOLLY

Garden clearance, maintenance, hedge cutting,
tree surgery, fencing and patio cleaning.
Tel. 01865 390740



LLOYD'S TREE SERVICES

A friendly, professional service. Please feel free to
contact me for advice or a no obligation quote.
Email lloyd@lloydstreесervices.com or through
www.lloydstreесervices.com or 07714 255209



Tamsyn Lay MSc (Hons) MChiro MMCA MCTIMONEY CHIROPRACTOR - FYFIELD

In pain or do you just require a general back
check? Chiropractic can help with back pain and
sciatica, neck, shoulder and hip pain, headaches,
migraines, sports injuries and rehabilitation and
general well-being. 07810 557639/
tlay@espina.co.uk



DAVIDSON-DECORATING

Interior, exterior and wallpapering.
References available.
Siobhan 07765780672
davidsondecorating@gmail.com



GOLDILOX CAKES

Beautiful and delicious homemade cakes for
any occasion
Contact Marie for information on
07545211465 or www.goldiloxcakes.com



MATHS TUITION

Mike Hudson, 77 Netherton Road, Appleton
Phone 863340.



APT HARD LANDSCAPING

Paving: Fencing :Stone walling:
Brickwork :Turfing:General garden
maintenance

Andy:07887778784

email:andyphthomas@hotmail.co.uk



Freelance Hairdresser

20 years experience. Contact Stella on
01865 864687. mobile 07977 099975

Appleton website is now

www.Appleton-eaton.org
appletonandeaton@gmail.com



Service and Repair Centre on the A415!

Fully insured, fully equipped workshop for ALL
of your vehicle servicing and repair needs!

- Servicing
- Repairs
- Cambelts
- Clutches
- MOT
- Exhausts
- Brakes
- Diagnostics
- Tyres
- Tracking
- Punctures
- Batteries

Vehicle recovery and transportation available

MOT Bay for classes 4 and 7!

Northfield Orchard Farm, A415 Witney Road, Southmoor, OX13 5FU

Contact us for a competitive quote

01865 820300 / 07508 617 580

sales@edwardsvs.co.uk

Find us on facebook @edwardsvs

Thank you for donations towards the production of the Advertiser from the Chapel

Appleton Volunteer Transport Scheme (AVTS)

provides transport for residents of Appleton, Eaton, Fyfield and Tubney, unable to drive themselves, to medical appointments in Oxford, Botley, Abingdon, Witney and Wooton. Please call the AVTS mobile 07503 447884 and leave a message (name, your location, plus date, place and time of appointment) OR send a text message with this information. Your call or message will be returned by the next day at the latest

EDITOR: David Staunton
Homeleigh House, Netherton Road, Appleton,
Tel 862505
Email: editor.advertiser@gmail.com
DISTRIBUTION COORDINATOR: Sophie Willis
Email: willissophie@googlemail.com
ACCOUNTS: Wanda Todd
12 Badswell Lane, Appleton
Email: accounts.advertiser@hotmail.co.uk
NOTE: This newsletter is also available on the Parish website. If you do not wish your item to be displayed online, please inform the Editor. All items are included in good faith, and the Appleton with Eaton Advertiser cannot take responsibility for any content.

Advertiser

Deadline for June issue:
12.30, 19th May (19th of the month is
the usual deadline)

Notices for village organisations

All printed copy to the shop or by email to editor.advertiser@gmail.com before the deadline. Please email if you can!

No formal payment is required but we ask for a donation towards the running costs of the Advertiser: between £5-50 depending on the length and frequency of entries. Please try to restrict your item to half a page maximum. Liaise with David Staunton to agree an appropriate donation.

Advertisements

To book advertising space:
email Wanda Todd:
accounts.advertiser@hotmail.co.uk
2012 Advertising charges per issue

- Listing:
30p per word of 3 letters or more and a minimum of £3.00 per advert.
Each telephone and email address is to count as a word
- Display adverts:
£25 for a quarter page

Please indicate whether you want (1) a display advert or (2) a listing. If you want a listing the charge is made per word so please either supply the text or say how many words. Note that payment is required in advance, and for long-term adverts we would like 3 months in advance. Cheques payable to Appleton PCC and sent to:
Wanda Todd, 12 Badswell Lane, Appleton
OX13 5JN

Church Services May 2019

ST LAURENCE, APPLETON

Sunday 5th 8 am Communion Service (BCP)
 10 am Communion Service (CW)
 6 pm Evensong

Sunday 12th 10 am Communion Service (CW)

Sunday 19th 10 am Parish Giving Scheme Celebration Service
 6 pm Evensong

Sunday 26th 10 am Communion Service (CW)

Morning Prayer on Thursday mornings at 9.15 am.

Who to call:

For enquiries about Baptisms, Weddings, Funerals or Church buildings, please contact Reverend Ken at Appleton Rectory on 655737, or email him on kencampbell@stlaurencechurchappleton.org

For up-to-date information on Sunday services & other events, please refer to the Calendar pages of the Church website:
www.stlaurenceappleton.org

(BCP) Book of Common Prayer (CW) Common Worship

